

# Connecting local and statewide efforts to improve the wellbeing of children, families, and communities.



## WASHINGTON'S EARLY CHILDHOOD NETWORK

SCAN TO LEARN MORE



## 2025 Legislative Ask

This session, Washington Communities for Children (WCFC) requests **\$4 million to maintain and strengthen the WCFC network infrastructure** across Washington state. The WCFC Network is a critical component of our state's early childhood system because of our coordination of cross-sector partnerships at the state, regional, and community level.

## Where the Dollars Go



### Bolstering Regional and Statewide Coordination Efforts

WCFC is a network of 10 Regional Early Childhood coalitions across Washington that are supported by a team of specialists focused on policy and advocacy, equity, data, and community engagement.



### Aligning with Washington's Early Learning Coordination Plan

WCFC effectively weaves partners together to advance Washington state's early learning system priorities.



### Outreach to Families and Providers Through the WCFC Network

As the state anchor partner for Vroom, **WCFC reached over 12,000 families and child health care providers** in one year through Vroom engagement alone, **increasing parental resilience and knowledge of parenting and child development.**

## R.O.I. for WA

### Did You Know?



The economic impacts of **insufficient child care cost Washington state \$5 billion annually.\*** Steps to address this need to be coordinated at the state, regional, and community level.

\*Wiggins, K. (2024). *The Economic Impacts of Insufficient Child Care Cost Washington State \$5 Billion Annually*. ReadyNation. [www.strongnation.org/readynation](http://www.strongnation.org/readynation)

### Statewide Infrastructure



Over 3,500 families and early childhood professionals were connected to essential resources through local network events.

### Regional Coordination



In six weeks time, the WCFC Network was able to engage 472 families and child care providers in listening sessions, the majority of whom live and operate in rural communities.

### Uplifting Community Voice

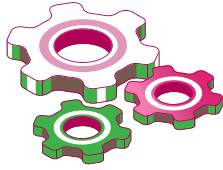
WCFC is an essential conduit between local communities and state decision makers; ensuring those most impacted are informing program and policy priorities.

“**We’re not just connecting at the local community level, but we’re connecting with other programs across the state to build a better network of services.**”

*Elisia Anderson, Peninsulas Early Childhood Coalition*



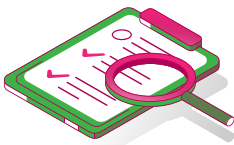
1



## Why We Exist

As our name states, the first 5 years of life are fundamental. Our mission is to uphold communities in achieving their collective goals for children and families - and in doing so, strengthen Washington's early childhood ecosystems.

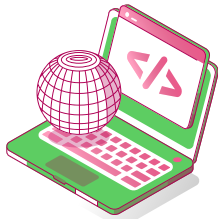
2



## What We Do

First 5 FUNdamentals provides a vital and trusted foundation for Washington's early childhood stakeholders through our leadership of collaborative initiatives and programs. We mobilize funding, provide network facilitation and project management, weave collaborative community partnerships, and build public will.

3



## Our Initiatives and Programs

We currently lead the following initiatives and programs: **Washington Communities for Children**, **Pierce County Early Childhood Network**, and **Family Connects Pierce County**. First 5 FUNdamentals also provides fiscal sponsorship to other early childhood-focused projects across the state.

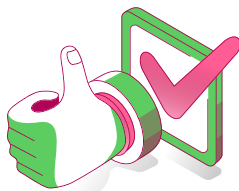
4



## Cross-Sector Collaboration

By strengthening cross-sector connection and collaboration, our initiatives and programs provide an essential way of organizing with community to meet the complexities around early childhood in Washington state, resulting in generational impact.

5



## Uplifting Community Voice

Our community-centered, network approach allows us to connect authentically with communities across the state, ensuring those most impacted directly shape the policies and structures that affect their lives and their children's future.